



THE INDUSTRY'S MOST COMPREHENSIVE SET OF STANDARD CONNECTED SOLUTIONS.

Proactive, predictive tools that drive uptime and lower total cost of ownership.



INTERNATIONAL 360

The International® LT® Series and RH™ Series models come equipped with factory-installed telematics and five years of service, including:

- Advanced Remote Diagnostics
- Intelligent Fleet Care, including Fleet Health Monitoring
- Over-the-air (OTA) programming
- Gateway Integrations (access to third-party compliance/fleet management without extra hardware)
- Configurable mobile app
- International® 360 service communications

5
YEARS

WHEN COMBINED, THESE SOLUTIONS CAN HELP YOU SAVE UP TO \$7,000 OR MORE OVER FIVE YEARS.*

*Depending on annual miles driven and other operational conditions.

All makes. All models. All in one place.

VISIBLE – Our solutions sort through volumes of vehicle data to deliver only information that's critical for you to know.

EASY TO UNDERSTAND – We translate fault code data into simple terms with severity ratings and most likely needed parts and service.

ACTIONABLE – Parts inventory availability at nearby dealerships, all-makes service center mapping, online service request initiation, and more.

OnCommand[®] Connection

THE INDUSTRY'S FIRST AND ONLY OPEN ARCHITECTURE, ALL-MAKES, ALL-MODELS REMOTE DIAGNOSTICS TOOL

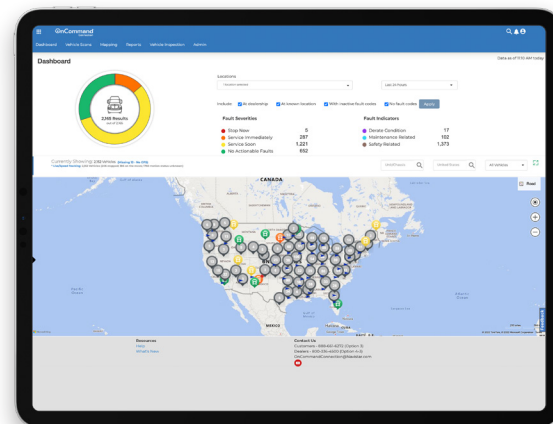
Advanced Remote Diagnostics

Monitor the health and status of your entire all-makes fleet

Key Feature	Benefit
Fault alerts, severity ratings, most likely needed parts and service	Takes guesswork out of check engine lights so you know if it's a critical issue or if it can wait until the next scheduled service.
Comprehensive vehicle health reports, MPG, fault history, and more	Delivers both high-level overview as well as detailed vehicle health data, depending on your needs.
Interactive fault code action plans	Makes servicing vehicles faster and easier with detailed, step-by-step instructions on how to address vehicle faults.
GPS location and mapping	Tells you where vehicles are, where they have been, and how fast they've been driving. Shows nearby service stations, all-makes dealerships, tire centers, and more.
OTA programming	Allows for increased uptime by setting programmable parameters and updating software calibrations remotely without taking the vehicle out of service.

OnCommand[®] Connection Intelligent Fleet Care Tools

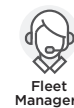
Key Feature	Benefit
Fleet health monitoring	Avoid breakdowns with weekly reports on vehicles at highest risk of roadside failure.
Advanced preventive maintenance	Optimize PM intervals with customized, data-driven recommendations for each VIN.
Advanced fuel analytics*	Improve fleet efficiency with reports on key driver behaviors and other factors that affect fuel economy.
TPMS integration	Improve fuel economy and extend tire life through back-office visibility to tire pressure on vehicles in operation.



International[®] 360 Service Communications

Provides a seamless communication channel with the International[®] Truck service network.

- Streamlines communication, accelerates the repair process, and drives greater uptime
- The only OEM service communication tool that supports all-makes fleets without per-VIN surcharges
- Integrates telematics, dealer parts inventory, and other vital information into one easy-to-use tool
- Centralizes vehicle health data, service history, and more



Gateway Integrations One size DOES fit all

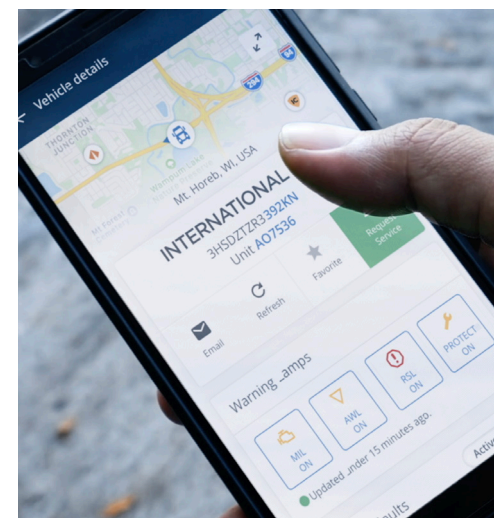
Subscribe to select third-party fleet management and compliance providers through our factory-installed telematics device. Simply call the provider of your choice and subscribe. It's as easy as that.

- One factory-installed, warranty-covered device
- One high-quality source of vehicle data
- NO prewiring costs
- NO extra hardware costs
- NO aftermarket installation costs

Currently Available Partners



OnCommand[®] Connection Mobile App The power of OCC at your fingertips



Key Feature	Benefit
Fault code descriptions and severity	Instantly know what a check engine light means without bringing it to a service center.
Configurable home screen	Customize your app to see the details that are important to you.
Vehicle health reports with critical health details, including "send via email" button	Instantly share vehicle health data with your dealer, home office, or send a copy to yourself.
Initiate service button	Give your dealer advanced notice before you arrive.

*Supports International A26 engine and S13 Integrated Powertrain